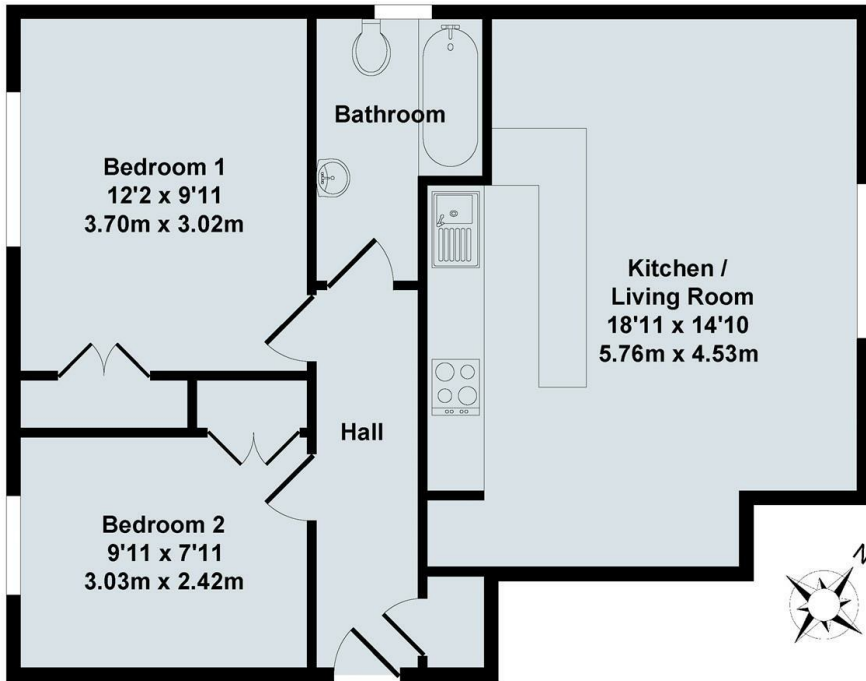




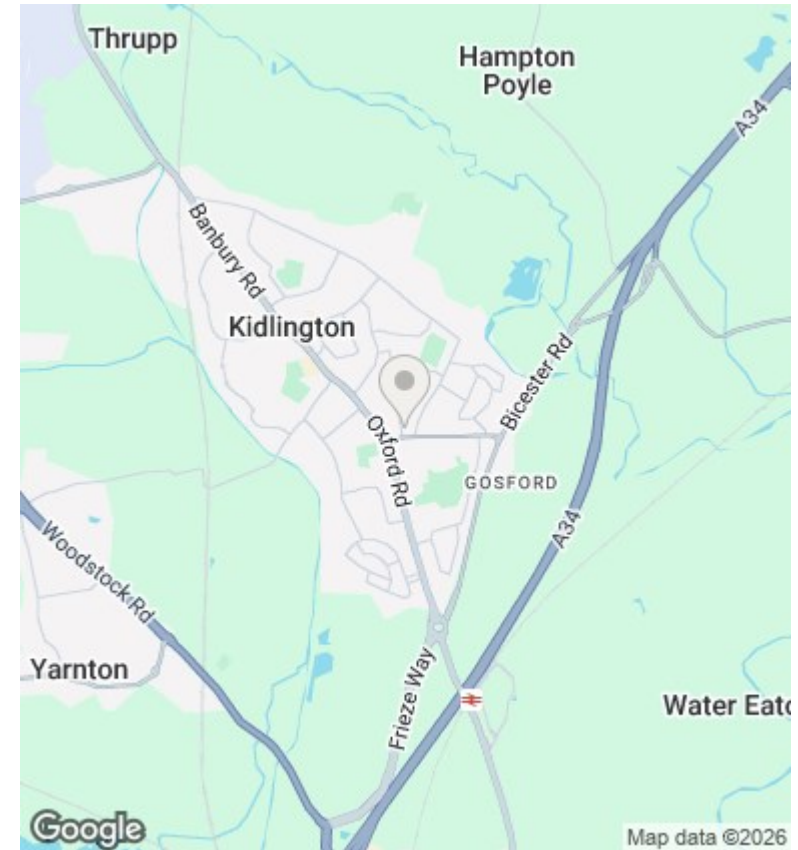
1b Blenheim Road, Kidlington, Oxfordshire, OX5 2HP

£1,400 - 24th June 2025.

- Two bedroom maisonette
- Gas CH
- Council Tax Band C
- Unfurnished
- Off street parking for 1 car
- Mains gas electricity and water
- Ground floor
- EPC rating C



Total Approx. Floor Area 592 Sq.Ft. (55.0 Sq.M.)
All items illustrated on this plan are included in the "Total Approx Floor Area"



Directions

Viewings

Viewings by arrangement only. Call 01865 515900 to make an appointment.

Council Tax Band

E

EPC Rating:

C

Energy Efficiency Rating		Current	Potential
<i>Very energy efficient - lower running costs</i>			
(92 plus) A			
(81-91) B			
(69-80) C		72	78
(55-68) D			
(39-54) E			
(21-38) F			
(1-20) G			
<i>Not energy efficient - higher running costs</i>			
England & Wales		EU Directive 2002/91/EC	